

GLIMAKRA FELT

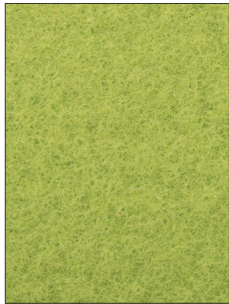


Glimakra felt

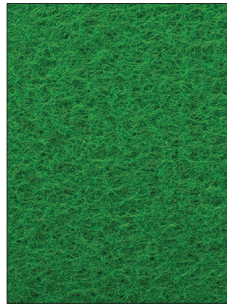
Colour chart



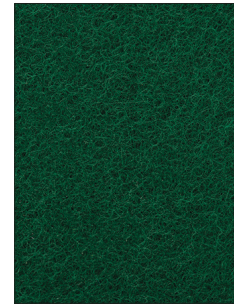
STANDARD COLOURS



446



447



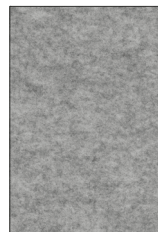
448

OPTIONAL COLOURS

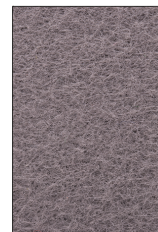
The felt in these colours is not available in stock, delivery time on request.
Min. order quantity of 8 packages (48 JungleWall leaves) / colour.



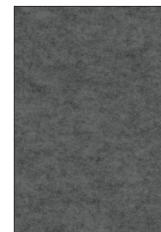
401



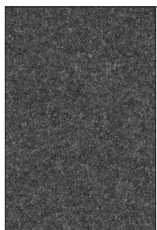
401 ML



494



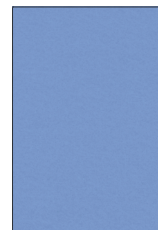
494 ML



496 ML



499



450



450 ML



GLIMAKRA
OF SWEDEN

Glimakra felt

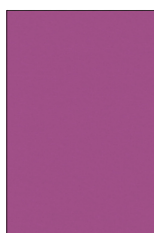
Colour chart



456



446 ML



432



432 ML



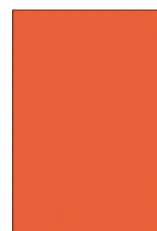
424



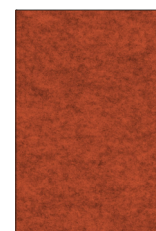
424 ML



423 ML



426



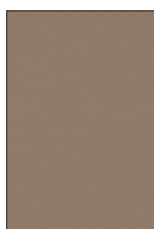
426 ML



438



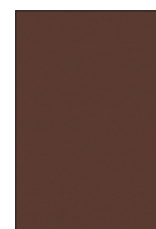
438 ML



409



409 ML



478

Glimakra felt

Colour chart



GLIMAKRA
OF SWEDEN

This is our range of flame-retardant design felts with a velour finish and high abrasion.

Weight	Felt 800 g/m ²
Thickness (mm)	5
Length (lm)	15
Width (cm)	200

SPECIFICATIONS

- Composition: 100 % Polyester
- Fire Reaction
 - o EN 13501-1+A1: B-s1, d0
 - o ASTM E-84-18: Class A
- Abrasion resistance:
 - o UNE-EN 14465+A1: Class A
 - o ISO 12947- 2 / AC: > 50.000 rubs cycles Martindale
- Colour fastness to light
 - o EN ISO 105-B02: 6-7
- Sound absorption
 - o UNE-EN ISO 354: aW = 0,15 (H)
 - o EN ISO 11654: Class E
- STANDARD 100 by OEKO-TEX®

MAINTENANCE GUIDELINES

MAINTENANCE CODE

W/S-Clean with water-based cleanser or mild, water-free dry cleaning solvent.

REGULAR MAINTENANCE

Vacuum regularly using the proper attachment to avoid pilling.

GENERAL RECOMMENDATIONS

- Treat stains promptly. The longer a stain remains on the textile, the more difficult it will be to remove. A professional furniture cleaning service is recommended.
- Always pre-test any cleaning method in an inconspicuous area.
- Several light applications of a cleaning agent are less harmful than a single concentrated application. Repeat stain treatment several times if necessary.
- Never use heat to clean textiles. Heat can set stains.
- Do not use agents containing bleach. These agents may cause discolouration over time.
- Do not over saturate the textile or let water pool in seams.

STAIN TREATMENT

- Soak up any excess moisture immediately.
- For water-based stains, use a clean, soft, white cloth, a natural sponge, or a nylon soft-bristle brush with lukewarm, soapy water. Brush the stain with light, quick strokes. Avoid a scrubbing motion and work from the edge of the stain toward the center.
- For oil-based stains, use a clean, soft, white cloth, a natural sponge, or nylon, soft-bristle brush with a water-free dry cleaning solvent. Brush the stain with light, quick strokes. Avoid a scrubbing motion. Work from the edge of the stain toward the center.
- For insoluble stains (e.g. chewing gum, candle wax, etc.), use a plastic bag filled with ice to rub the stain until the substance becomes brittle. Use a clean, dull, flat knife to gently remove the substance. If the stain persists, blot the area with a clean, soft, white cloth or natural sponge and lukewarm soapy water.
- If the stain persists, gently dab a pH-neutral cleanser, upholstery spot cleaner, or an equal mixture of water and enzyme detergent (e.g. laundry detergent) on the stain and let it sit for one minute.
- Rinse stain treatment thoroughly with a natural sponge moistened slightly with cool, clean water and completely remove all cleaning solution residue as left over residue can attract soil over time.
- Extra care should be taken when cleaning dark colours to avoid creating light marks that can be caused by colour transfer.
- Avoid excess rubbing to prevent discolouration and damage to the face of the material.
- Do not saturate the surface.
- Allow the textile to dry thoroughly and vacuum before using.

NOTES

The information above is a guide to help in the maintenance of upholstery textiles. Glimakra of Sweden can neither guarantee, nor take responsibility for specific results.

Under no circumstances shall Glimakra of Sweden be liable for any incidental, consequential, or other damage resulting from negligence, misuse, mishandling, or exposure of any chemicals used in connection with maintenance. Information relating to chemicals/cleaning solvents, environmental use, and human exposure should be reviewed with appropriate suppliers. All label instructions on their use and precautions should be followed.