

**think**space

# BuildUp Huddle Duo

BY KAUPPI & KAUPPI FOR GLIMAKRA OF SWEDEN



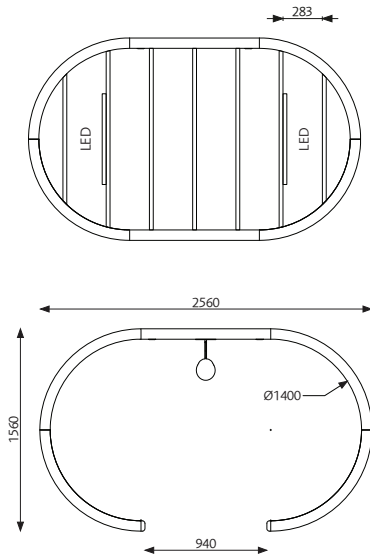
# BuildUp Huddle Duo Dimensions

BY KAUPPI & KAUPPI FOR GLIMAKRA OF SWEDEN

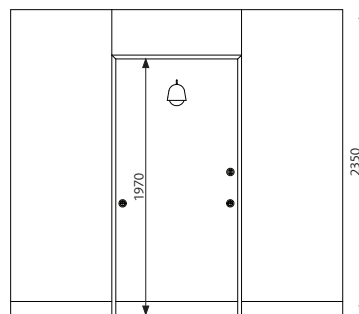
## BuildUp Pod Duo

BuildUp Pod Duo is characterized by openness, functionality, and accessibility – with the mission to create inviting working and meeting spaces, and to contribute to pleasant sound atmospheres. Semi-muted, subdued acoustic rooms with an equally airy feeling as embracing cosiness, with the same design as the previously launched BuildUp system. The rounded shaped Duo is offered in two different configurations. The Coupé version is designed to host work sessions or informal meetings for two persons or more, with facing sofas and a centered pillar table. Duo Work is prepared for one person in need of a private space, furnished with both a desk and a sofa for reading and recreational pauses.

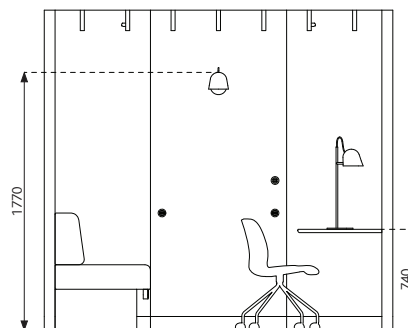
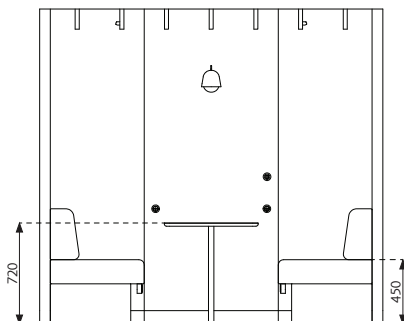
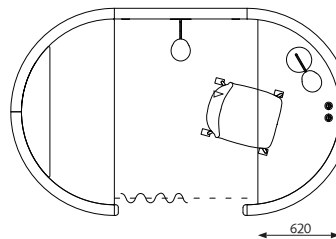
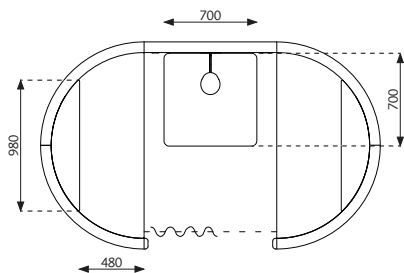
## BuildUp Pod Duo (1–4 Persons)



All pods have generous entrances without thresholds that closes with curtains. The spaces are pleasantly lit by integrated LED light-strips between the wooden ceiling beams, combined with additional lighting on wall or table. Conveniently placed power outlets makes it easy for users to plug in various devices. The fabric covered wall elements have equally good sound absorption on the inside as on the outside, which means that the pods also serve as an efficient acoustic solution for the greater surrounding interior. The self-supporting construction is quick and easy to install.



## BuildUp Pod Duo | Coupé & Work



# BuildUp Huddle Duo Dimensions

BY KAUPPI & KAUPPI FOR GLIMAKRA OF SWEDEN

## BuildUp Pod Duo (1–4 Persons)

### Options

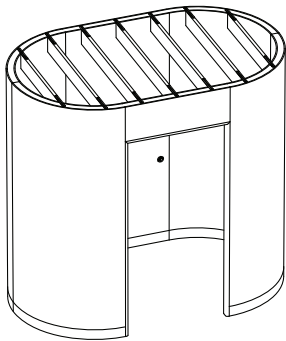
#### Carpet:

Ogeborg Foris / Essential 1031 (5.8mm) form fitted diameter 242x142cm.

#### Curtains:

Dim out Vescom Bedra. Other curtains on request. 260 cm, length 216 cm, hook 8/6.

See page 6-7 for colour choices on carpet and curtains.



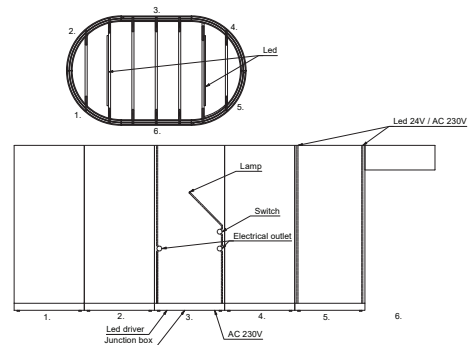
### Delivered Complete With:

2 LED-Light strips which are connected to switch. 24V LED Lighting 19.2W / m, 3000K, white light. Drivers 24V 60W.

Wall lamp "Streck", fixed mounting connected to switch. Black RAL 9005 with brass details. Switch inside shade, adjustable shade. 1 x 6W LED module 2700K 660lm (included).

2 electrical outlets in the screen.

Ceiling-mounted curtain rail: black for one curtain, 1350 mm, Waveglid 8/6.



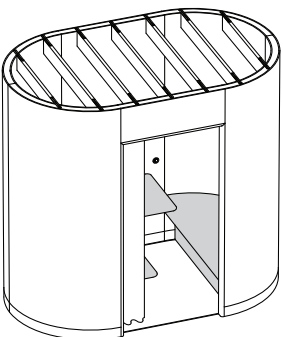
## BuildUp Pod Duo | Coupé

### 2 Pod Sofa:

Form fitted sofa for 1-2 persons. Width 1400mm, seat depth 480mm. Back cushion 400mm high. Base in Ash with Power Dot midi.

### 1 Coupé Table:

700x700mm Ash



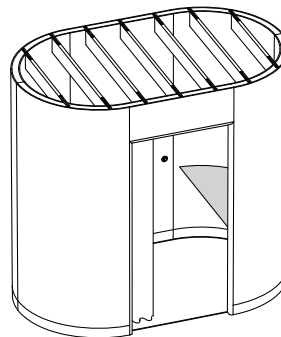
## BuildUp Pod Duo | Work

### 1 Pod Work:

Form fitted worktop 1390x620x25mm. Radius 700mm. Ash or Linoleum with edge in clear lacquered MDF with 2 Power Dot midi. Height 740mm. Fixed mounted.

### 1 Pod Sofa:

Form fitted sofa for 1-2 persons. Width 1400mm, seat depth 480mm. Back cushion 400mm high.



# BuildUp Huddle Duo Specifications

BY KAUPPI & KAUPPI FOR GLIMAKRA OF SWEDEN

## Description

**Duo Pod:** 1 straight screen 1000mm and 4 curved screens with a radius of 700mm, 90° connected with hidden special fittings.

**Height:** 2350mm (screen incl. plinth) + adjustable feet

**Plinth with adjustable feet:** black metal, height 100mm.

**Upholstery:** Furniture nailed with fabric on both sides. See Product sheet Fabric and Piping.pdf for our standard fabrics, the sheet is available here: <https://glimakra.com/en/download/>.

**Frame straight screen:** 2 x 35mm sound absorbing polyether (Oeko-Tex) glued on both sides of an 8mm sound reducing MDF board with an 80mm solid wooden frame.

**Frame curved screens:** 75mm recycled polyether from own production inside two sheets of perforated masonite and an 80mm solid wooden frame.

**Ceiling beams:** finger-jointed pine, 30 x 138mm, 10% white. 100% recyclable materials.

## Mounting

All pods have a completely self-supporting construction, which means that no floor, wall or ceiling attachments are necessary. Adjustment feet are included to compensate for uneven floors. The Pods are easy to build and move if a new location is desired. The screens are connected with hidden special fittings. Allen key included.

The plinth is mounted on the screen upon delivery. An acoustic strip is attached under the plinth around the entire room. Delivered on a roll.

Installation, repair and maintenance of electricity to the sockets, switches and lighting may only be carried out by a qualified electrician. Wiring is done in the plinth and in integrated flex pliable conduits in the screens. Electricity for lamps and lighting is drawn on top of the ceiling beams.

The curtain rail is mounted 60mm inside the screen and the curtain is hung with the right side inwards.

## Certificates

### Möbelfakta

The product meets the requirements for environment and responsible supply chains defined by Möbelfakta.

Glimakra of Sweden AB is certified according to ISO 9001:2015 and ISO 14001:2015.

## Specification

**BuildUp Pod Duo | Work**  
2560x1560mm

**Height:**  
2350mm (screen incl. plinth).

**Fabric:**  
Remix Screen 328

**Curtain:**  
Vescom Bedra 8059.14.

**Carpet:**  
Ogeborg Foris / Essential 1031 - 8J82.

**Furnishings:**  
1 Pod Work worktop in ash, 1 Pod Sofa Remix 326.

**Atmospheric lighting:**  
Wall lamp and table lamp Streck from Örsjö belysning.

# BuildUp Huddle Duo Finishes

BY KAUPPI & KAUPPI FOR GLIMAKRA OF SWEDEN

## Carpet

### Ogeborg:

Foris/Essential 1031 (5,8mm)

100% polyamide

Tufted, looped fringe

Approved by Byggarbetsnämningen

### Fire class:

Cfl-s1

Drawings available on request.

With edge tone in tone, 23 colours.

The carpet continues 1cm under the screen.

The carpet should be rolled up once before laying.

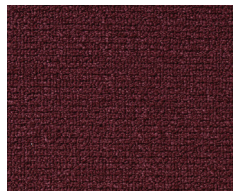
Other carpets on request.

Photographic scans are displayed as a guide and colour variations may occur. If needed, we advise you request actual fabric samples before ordering.

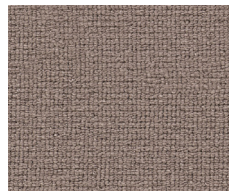
**Read more:** [www.ogeborg.se/kollektion/foris-essential-1031](http://www.ogeborg.se/kollektion/foris-essential-1031)



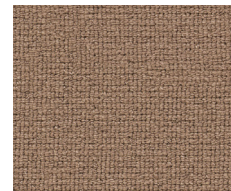
1031 - 1M74



1031 - 1M76



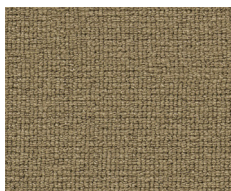
1031 - 1N22



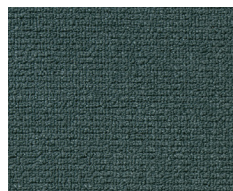
1031 - 1N23



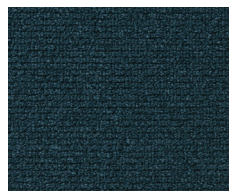
1031 - 2F27



1031 - 2F29



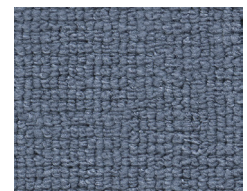
1031 - 3P74



1031 - 3P75



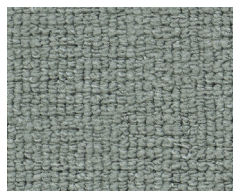
1031 - 3P78



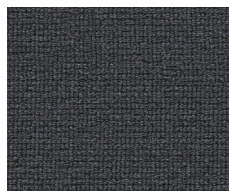
1031 - 3Q41



1031 - 4G29



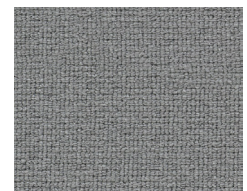
1031 - 4G65



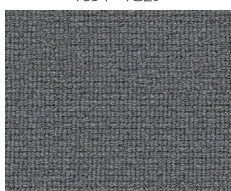
1031 - 5W57



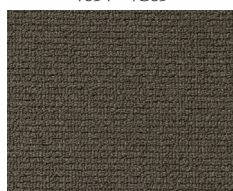
1031 - 5W58



1031 - 5W59



1031 - 5W60



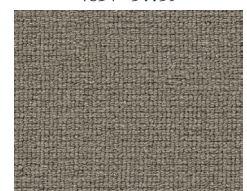
1031 - 7G21



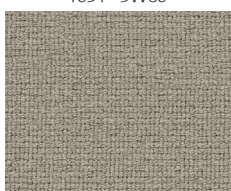
1031 - 8J46



1031 - 8J47



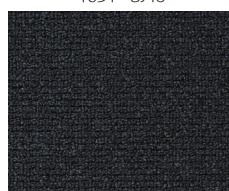
1031 - 8J82



1031 - 8J83



1031 - 9F57



1031 - 9F58

# BuildUp Huddle Duo Finishes

BY KAUPPI & KAUPPI FOR GLIMAKRA OF SWEDEN

## Dim Out Curtain

**Vescom:** Bedra

**Material:** 100% fire protected polyester

**Fire class:** EN 13773, class 1 BS 5867 – 2, typ C NF P 92 / 503 – 507, M1 DIN 4102, B1 UNI VF 8456 – 8457, class 1 NFPA 701 CAN / ULC S109 IMO 2010 FTP del 2010

**Colour fastness to artificial light:** DIN EN ISO 105-B02: 6

### Washing instructions:

More information is available here:

<https://www.vescom.com/en/dessin/bedra>

For more information contact:

[sales@thinkspaceoffice.com](mailto:sales@thinkspaceoffice.com)



# BuildUp Huddle Duo Product Images

BY KAUPPI & KAUPPI FOR GLIMAKRA OF SWEDEN

