



feel
free
to **talk** to **meet** to **work**



hushfree.S



hushfree.S

HushFree.S is an acoustic pod with an acoustic class A according to the ISO 23351-1:2020 standard, with new lighting with an intensity of 500 lux at the level of the tabletop. It allows you to spend much more time meeting and chatting online while maintaining peace and quiet. The pod is designed for individual work, longer videoconferences and telephone calls. The pod has a desk with a manual top adjustment – this function is easy to use and does not require additional power. It lets you work either standing or sitting, which allows you to adopt an optimal body position during work. In just a few seconds, the user can change the height of the tabletop to the appropriate level adapted to the task at hand. Aesthetically designed side LED illumination of the user's face ensures that they are even better visible during video calls.

You can equip the hushFree.S pod however you want – with a comfortable stool or a task chair. The acoustic pod allows you to work even more efficiently and connect with people online wherever they are.



FEEL THE FREEDOM OF CHOOSING HOW AND WHERE YOU WORK!

LEARN MORE ABOUT HUSHFREE.S ACOUSTIC POD

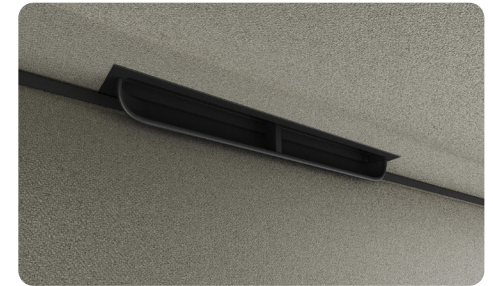
- 1 LED lighting activated by a motion sensor with adjustable intensity
- 2 efficient ventilation activated by a motion sensor
- 3 upper panel prepared for connecting sprinklers and smoke detector
- 4 door made of tempered, safe, laminated acoustic glass with handrail
- 5 back wall made of acoustic glass
- 6 integrated power module
- 7 additional side LED lighting
- 8 high-resolution touchscreen to control pod settings, adjust lighting and airflow, and extend calendar reservations
- 9 height-adjustable sit&stand top
- 10 acoustic panels
- 11 pod occupancy signal (optional)
- 12 floor covering
- 13 integrated wheels
- 14 stable levelling feet
- 15 possibility of seismic anchoring

PHONE CALLS, LONGER VIDEO CONFERENCES OR INDIVIDUAL FOCUSED WORK JUST GOT BETTER!



EXCEPTIONAL ACOUSTIC COMFORT

High class A acoustic comfort according to the ISO 23351-1:2020 standard for office acoustic booths.



BREATH EASIER – STAY LONGER

The new ventilation system in the pod circulates the air in the pod even faster, ensuring optimal working conditions.



EVEN BETTER LIGHTING FOR AN EFFICIENT WORKPLACE

The new LED lighting system in the pod provides lighting with a light temperature of 4000 K and 500 lux at the tabletop level for even more effective work.



SIT&STAND DESK

The booth has a desk with manual height adjustment, which ensures the possibility of both standing and sitting work. This feature is easy to use and requires no additional power supply.



MOBILITY – FEEL THE FREEDOM OF CHOOSING A LOCATION

The pod has built-in wheels, thanks to which it can be freely moved around the office without having to dismantle it.



NEURODIVERSITY – WE SUPPORT INTEGRATED TEAMS

The pod is CAR certified (Certified Autism Resource) – creates a working environment that takes into account the needs of atypical people in terms of work organization, space, communication and perception.

FINISHES

Upholstery Athlon Plus **Gabriel**

66228 BLUE	60167 DARK GRAY	60140 LIGHT GRAY	68255 LIGHT GREEN
68252 YELLOW	63115 ORANGE	61194 BEIGE	64247 RED

Table

ABB WHITE	AGA VELVET BLACK
--------------	---------------------

Glass

PRZ CLEAR	MGA FROSTED
--------------	----------------

Case

ABB WHITE

AGC COSMOS GREY

Frame

JGC COSMOS GREY

DIMENSIONS AND TECHNICAL DATA



External dimensions of the pod (WxDxH):
48.97 x 35.43 x 90.53 in

- **acoustics A** – speech level reduction measured in accordance with the ISO 23351:2020 standard
- **total air flow:** 2 fans with a maximum airflow 94 CFM, 39 s / 44 l/s
- **LED lighting** with a colour temperature of 4000 K (adjusted in the range of 2200-6500 K) and an intensity of 500 lux at desk level
- structure prepared for anti-seismic ground fixing

EQUIPMENT



HUSHASSISTANT

HushAssistant is a 4-inch round, high-resolution touchscreen lighting and ventilation controller. It allows users to manage and adjust their lighting and airflow settings. HushAssistant can adjust brightness, color and activate scenes (moods) for different needs. HushAssistant also provides airflow adjustments to improve air quality and energy efficiency. Part of HushAssistant's functionality is to manage and display meeting room availability. Prepared for integration into the product's power supply. The system supports integration with the Microsoft 365 Business platform.



SIT&STAND DESK

Table top dimensions: 30.39 x 15.94 in, with height adjustment from 25.59 to 46.85 in. Made of 0.70 in thick plywood covered with HPL laminate on both sides. Maximum load 33 lbs. Available in two types of finish HPL laminate: white and non-fingerprint velvet black.



HUSHDOOR.LIMITER

Door opening limiter that can be fitted to the top and bottom hinges (2 pcs). Once fitted, the acoustic pod door opens to a maximum angle of 130 degrees.



HUSHOCCUPANCY.SIGN (OPTIONAL)

Activated by a motion sensor to signal the pod occupancy when in use.

The manufacturer reserves the right to make structural changes and changes in parameters that do not impair the usability of the products. The colours presented in the catalogue may differ from the actual colours of the products. The above offer is informative and does not constitute a commercial offer.

For more details, please visit our website

hushoffice.com



hushfree

