

HUSH FREE BOOTHS

Revolutionizing privacy Human-centric design


thinkspace



thinkspaceoffice.com

A man in a light-colored shirt and dark trousers is sitting in a modern office booth, working on a laptop. The booth has large windows that look out onto a lush green landscape. The interior of the booth is equipped with a desk, a laptop, and some office supplies. The man is smiling and appears to be enjoying his work environment.

THE *future* OF ACOUSTIC BOOTHS

The modern workplace demands solutions that prioritize both productivity and well-being.

Traditional office spaces can be noisy, disruptive, and lack personal comfort.

hushFree booths, designed with a human-first approach, utilizing Human-Centric Design provide optimal environments for focus, collaboration, and rejuvenation.

HUMAN *centric* DESIGN PHILOSOPHY

Designed for Today's Workstyles

Smart, flexible booths that support focus, comfort, and well-being through human-centered design.

Ergonomic Comfort—Spacious, with flexible furniture, power, lighting, VESA mount & color options

Air Quality—Built-in ventilation keeps air fresh

Acoustics—Superior sound insulation for true privacy

Accessibility—Inclusive design with ADA-compliant models



THE *new* HUSH FREE ACOUSTIC POD COLLECTION



The largest, most flexible range of Class A acoustic pods on the market, redefining workplace comfort and focus.



hushfree.XS



hushfree.S



hushfree.S.Hybrid



hushfree.XM



hushfree.M

hushfree.Access.M 



hushfree.L

hushfree.Access.L 

BRAND *differentiators*

We have five key product differences that set hushFree products apart from the competition.

The logo for thinkspace, featuring the word "think" in a bold, lowercase sans-serif font, followed by "space" in a lighter, lowercase sans-serif font. Above the "i" in "think" is a small icon consisting of three circles of increasing size arranged in a triangular pattern.

thinkspaceoffice.com



proven ACOUSTICS

hushFree booths are certified to *ISO 23351:2020* Class A, the highest standard for speech level reduction in office environments. Enabled with acoustic laminated glass and a magnetic-closing door for maximum sound attenuation.

| PRODUCT | DB RATING | CLASS |
|--------------------------|-----------|-------|
| hushFree.XS | 30.3db | A |
| hushFree.S | 30.2db | A |
| hushFree.S.Hybrid | 30.1db | A |
| hushFree.XM | 28.7db | B |
| hushFree.M | 30.2db | A |
| hushFree.L | 30.6db | A |

HUSH *assistant*

The intelligent, intuitive hushAssistant puts control at your fingertips. With a simple touchscreen, users can:

Adjust lighting to match natural sunlight cycles, boosting comfort and efficiency

Control ventilation for a personalized environment

Reserve the pod for work or meetings

Choose from presets: Auto, Focus, Video Call, or Relax

Plus, the “Coffee Time” reminder helps encourage regular breaks.



revolutionary CHANGE

Focus Mode: Bright, Sharp Productive

6500k light at 90% brightness enhances concentration for detail orientated tasks like drafting documents.

Video Call Mode: Bright, Professional Presence

4000k light with side LEDs enhances video quality, ensuring clear facial expressions and engaging conversations.

Relax Mode: Warm, Restorative Lighting

2800k light at 70% brightness creates a calming ambiance, ideal for short breaks and wellbeing.

Auto Mode

Auto mode is based on the circadian rhythm, dynamically adjusting brightness and color temperature according to the time of day, creating the most natural lighting conditions for the user.



enhanced LIGHTING

What is Human Centric Lighting?

Lighting designed for people—not just spaces. HCL mimics natural daylight by adjusting brightness and color temperature throughout the day to support the body's circadian rhythm, which regulates energy, focus, and sleep.

Proven in hospitals and schools, a first to pods—HCL lighting brings science-backed wellness seamlessly into Hush Free.

Why It Matters:

Enhances focus and productivity

Reduces fatigue and eye strain

Supports better sleep and well-being





MOBILITY MADE *simple*

Not only are hushFree pods flexible in layout and furniture, but they are also easy to reposition—with integrated castors as standard. No disassembly needed—booths can be repositioned in minutes, saving time and relocation costs



ENGINEERED FOR *fresh* AIR

HushFree booths feature industry-leading air ventilation to ensure comfort and well-being. Fans continue to refresh the air for 8 minutes after use, keeping the space fresh and ready for the next user.

| PRODUCT | No. OF FANS | AIR EXCHANGE | MAX. FAN PERFORMANCE |
|-----------------------------|-------------|--------------|----------------------|
| hushFree.XS | 2 | 33 | 80m3/h |
| hushFree.S, S.Hybrid | 2 | 39 | 80m3/h |
| hushFree.XM | 2 | 37 | 80m3/h |
| hushFree.M | 4 | 60 | 80m3/h |
| hushFree.L | 8 | 62 | 80m3/h |

quick ASSEMBLY

Lower Installation Costs

hushFree booths are quick and intuitive to build—saving dealers valuable time and labor costs.

Each unit comes with clear printed instructions and step-by-step assembly videos. Virtual and in-market support is available from our Technical and Installation Manager upon request.

| PRODUCT | INSTALLATION TIME | NO. OF INSTALLERS |
|---------------------------------|-------------------|-------------------|
| hushFree.XS, S, S.Hybrid | 2-3 hours | 2 |
| hushFree.XM | 3-4 hours | 2 |
| hushFree.M, Access.M | 3-4 hours | 4 |
| hushFree.L, Access.L | 5-6 hours | 4 |

** The time frame includes the work of a trained team that performs the installation.*

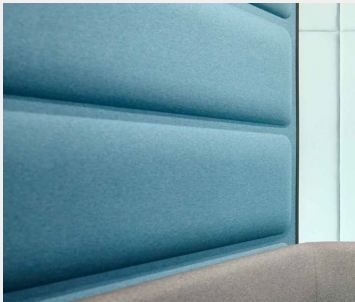


flexible

POWER OPTIONS

Each booth supports customizable power, including USB A+C, HDMI, and standard outlets.

features ACROSS THE RANGE



Class A Acoustics

The highest level of speech privacy across all booths, tested to ISO 23351:2020 standard.



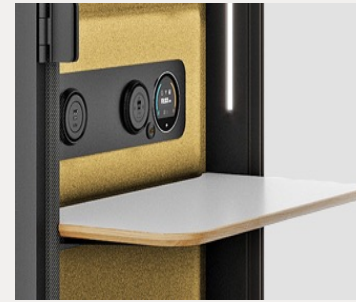
Mobility

All pods are fully mobile with integrated castors. No disassembly required and relocation takes minutes.



Hush Assistant Technology

A high-resolution touch screen controls lighting and ventilation and displays room availability.



New LED Lighting

A new-to-market, human-centered LED lighting that syncs with your circadian rhythm, with built-in facial lighting for better video calls.



Improved Ventilation

Booths have been redesigned to ensure powerful air flow is delivered where you need it.



New Door Handles

Acoustic laminated glass door with magnetic closure with a hand-rail hand anti-collision decal.

hushfree.XS

A well-priced compact single-person acoustic booth is designed for a quick, private phone call.

- Class A acoustics
- Standing height worksurface with LED facial lighting
- hushAssistant: *touch screen controls lighting, ventilation + booking system.*
- Power Module, USB A+C
- Freestanding stool, *option*

  1 H. 90.5 x W. 41.5 x D. 35.5

 thinkspace





thinkspaceoffice.com

hushfree.S

A spacious 1—person acoustic booth designed for focus work and video calls. With a height adjustable table—users can adjust from sitting to standing easily.

- Class A acoustics
- Height adjustable table with LED facial lighting
- hushAssistant: *touch screen controls lighting, ventilation + booking system*
- Power module, USB A+C
- Freestanding stool, *option*

  1 H. 90.5 x W. 49 x D. 37

 thinkspace




thinkspaceoffice.com

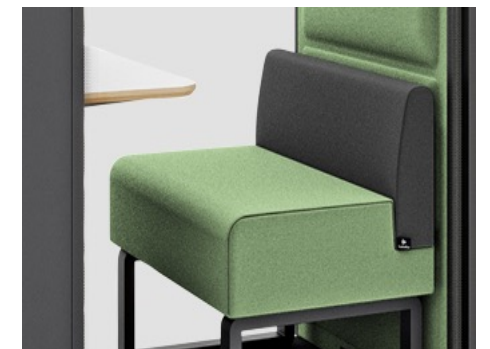
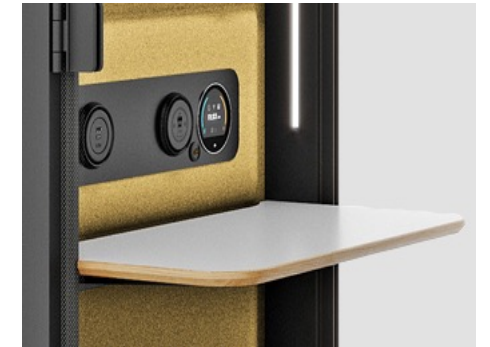
hushfree.S.Hybrid

A more comfortable option designed for longer video calls. Equipped with a sofa, worksurface, optional VESA Mount and LED facial lighting, users can enjoy well-lit, private conversations with comfort.

- Class A acoustics
- Seated height table w. LED facial lighting
- Sofa, *option*
- hushAssistant: *touch screen controls lighting, ventilation + booking system*
- Power module, USB A+C
- VESA mount + Occupancy sensor, *option*

  1 H. 90.5 x W. 49 x D. 37

 thinkspace



thinkspaceoffice.com

hushfree.XM

A unique sized acoustic meeting pod designed for up to 2-people and built for small spaces—Under 24sq ft eases Fire Life and Safety requirements.

- Class A acoustics
- Table and Sofa, *option*
- hushAssistant: *touch screen controls lighting, ventilation + booking system*
- Power module, USB A+C
- VESA Mount + Occupancy sensor *option*

  2 H. 90.5 x W. 87 x D. 35.43

 thinkspace



thinkspaceoffice.com

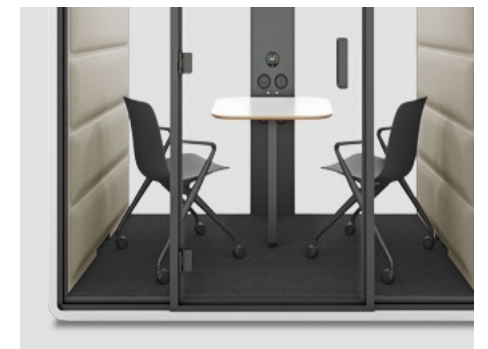
hushfree.M

An acoustic pod designed for up to 4 people - perfect for private conversations, group meetings, or focused work. With a cost-effective price per user, it's a smart investment.

- Class A acoustics
- Table and Sofa, option
- hushAssistant: *touch screen controls lighting, ventilation + booking system*
- Power module, USB A+C
- VESA Mount + Occupancy sensor option

  4 H. 90.5 x W. 87 x D. 54.72

 thinkspace



thinkspaceoffice.com

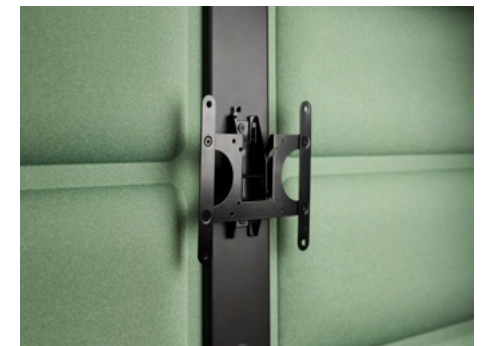
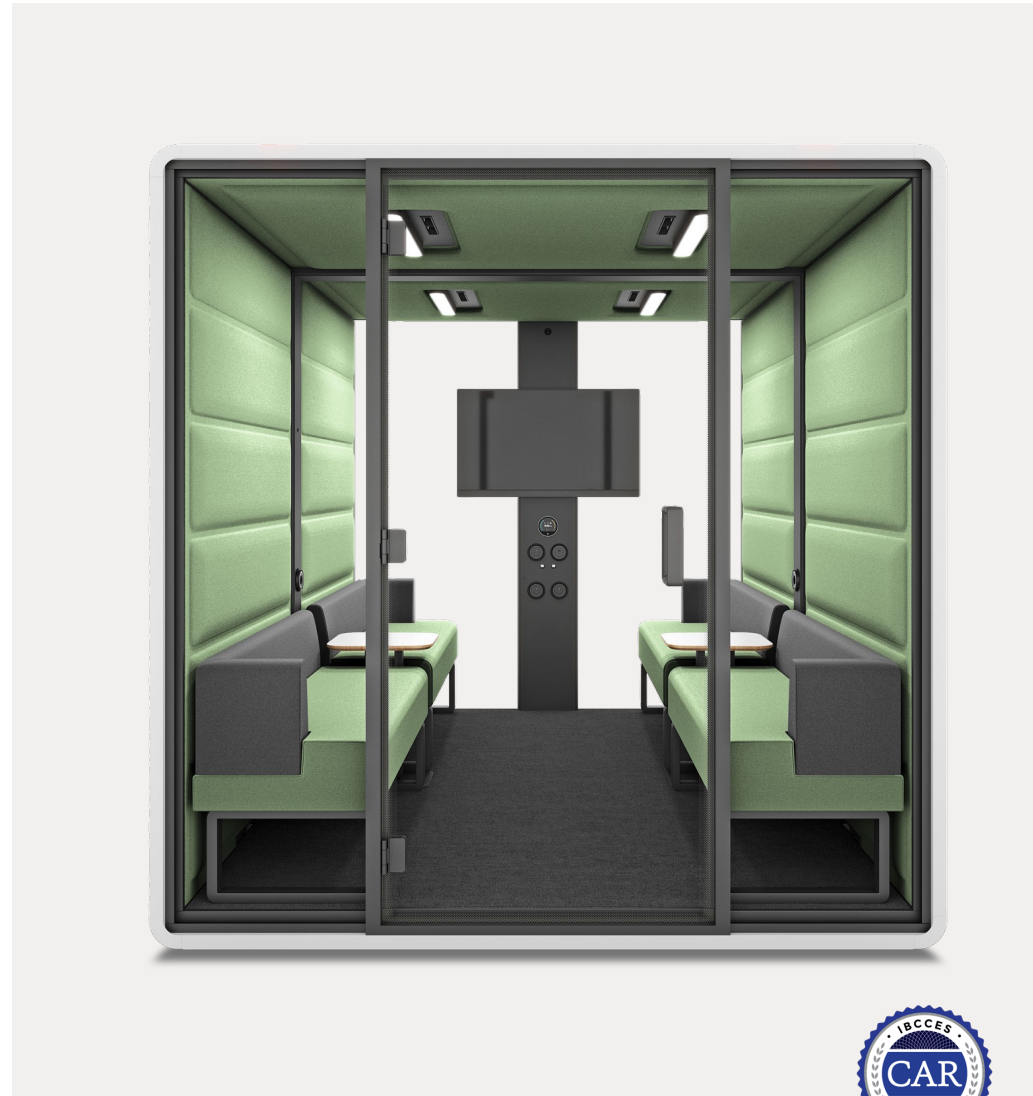
hushfree.L

An acoustic pod designed for larger groups of up to 8 people. Ideal for private conversations, group meetings, or focus work.

- Class A acoustics
- Table(s) and Sofa or Chairs, option
- hushAssistant: *touch screen controls lighting, ventilation + booking system*
- Power module, USB A+C
- VESA Mount + Occupancy sensor option

  8 H. 90.5 x W. 87 x D. 109.45

 thinkspace



thinkspaceoffice.com

BARRIER *free* DESIGN

hushFree supports diverse teams with unique controls and easy access. hushFree creates a working environment that considers the need of people with disabilities and neurodiverse needs. Create friendly working environments by reducing barriers and stimulating the strengths of everyone.

The logo for thinkspace, featuring the word "think" in a bold, lowercase sans-serif font, followed by "space" in a lighter, lowercase sans-serif font. Above the "i" in "think" is a small icon consisting of three circles of increasing size arranged in a triangular pattern.

thinkspaceoffice.com

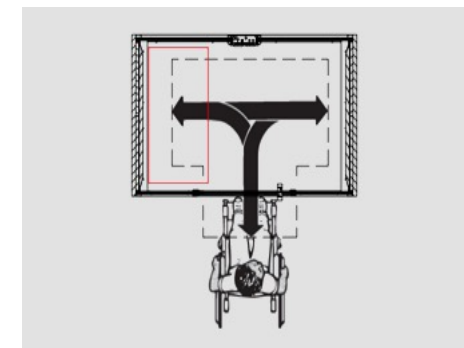
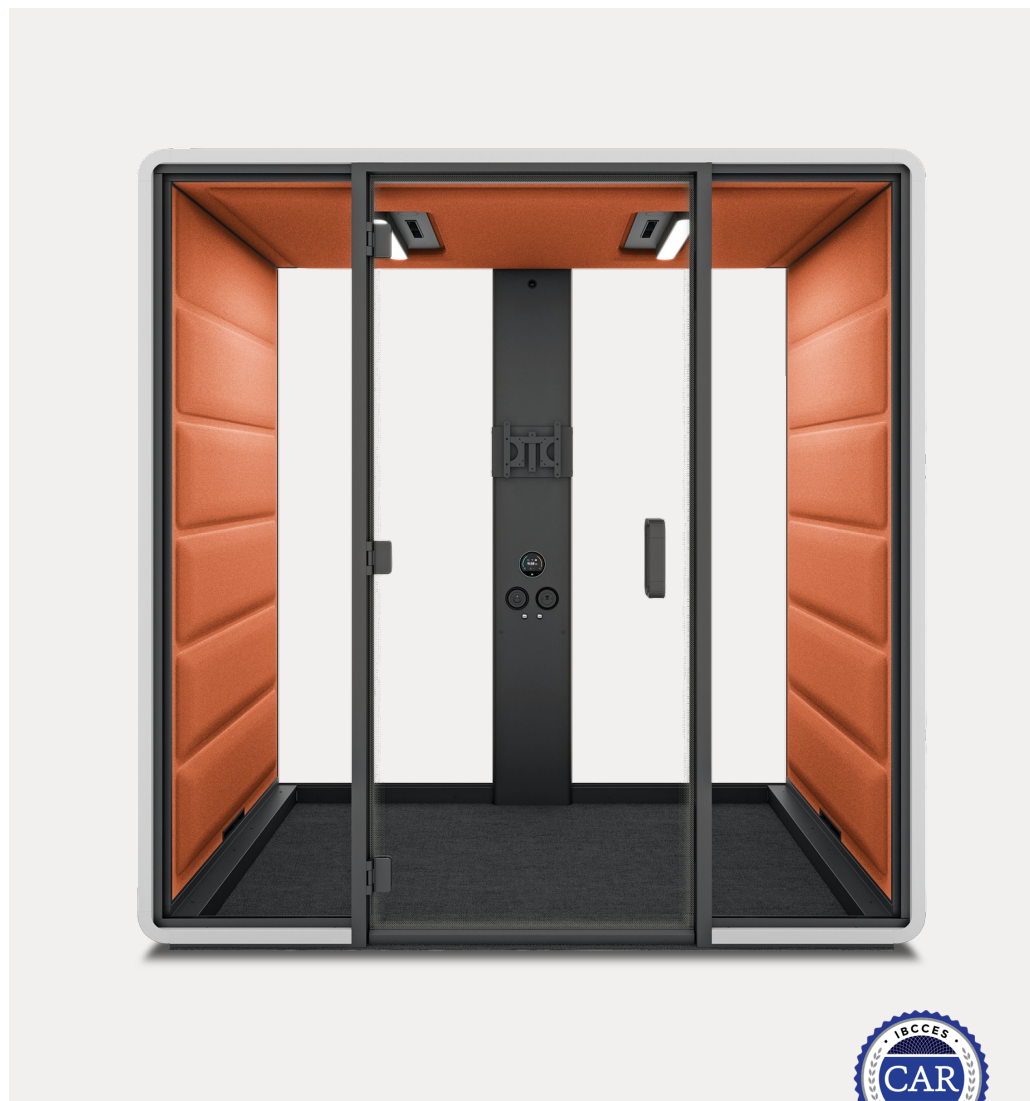
hushfree.Access.M

The 4-person pod featuring a low threshold, wider door, and ADA-compliant handle for easy, accessible entry. It accommodates a wheelchair T-turn for full inclusivity.

- Low threshold
- Wide door
- ADA compliant handle

  4 H. 89.76 x W. 86.93 x D. 54.72





thinkspaceoffice.com

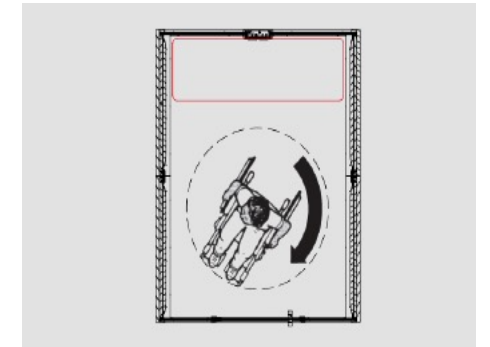
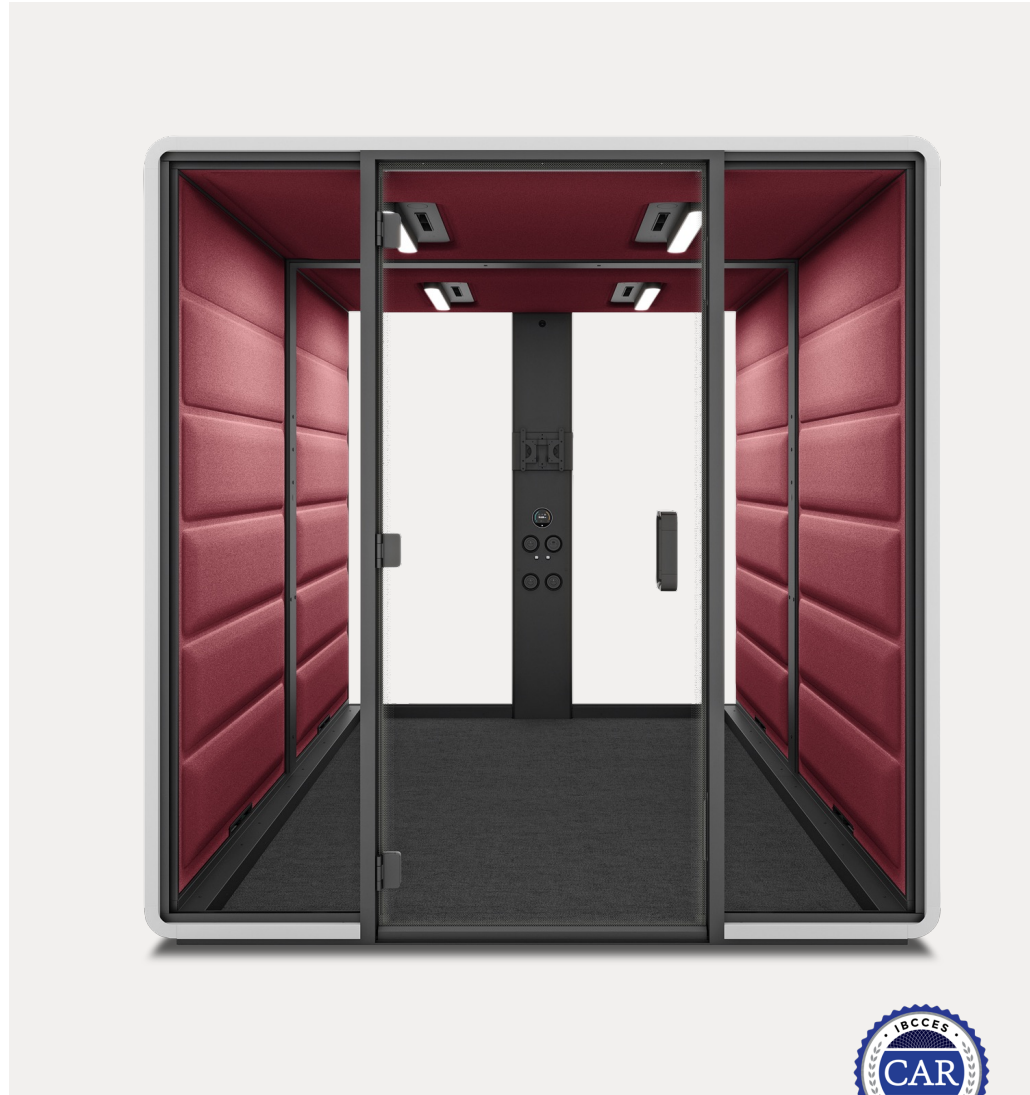
hushfree.Access.L

The 8-person pod featuring a low threshold, wider door, and ADA-compliant handle for easy, accessible entry. The pod is designed to accommodate a 360-degree turn for a wheelchair user.

- Low threshold
- Wide door
- ADA compliant handle

  8 H. 89.76 x W. 86.93 x D. 109.45

 **think**space



thinkspaceoffice.com

FREEDOM TO *configure* YOUR BOOTH

CASE



ABB White



AGC Cosmos Grey

GLASS

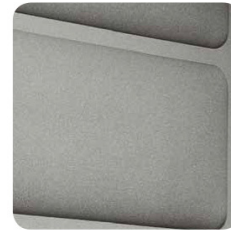


PRZ Transparent

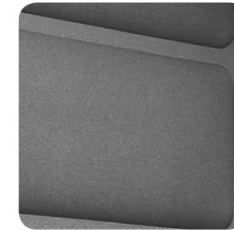


MGA Frosted

FABRIC OPTIONS



60140 Light Grey



60167 Dark Grey



61194 Beige



63115 Orange

TOP



ABB White



AGA Velvet Black

METAL ELEMENTS & FRAME



JGC Cosmos Grey



64247 Red



66228 Blue



68252 Yellow



68255 Light Green

FIRE, LIFE *safety*



Sprinkler / Fire Strobe

0.78in cut out for smoke detectors and 2.55in for sprinkler installation—designed for seamless overhead integration.



Fire Suppression Kit

Under 24sq. ft—sprinkler-exempt according to NFPA.
Fire suppression kit available as option for larger pods.

CODE *compliance*

HushFree booths are rigorously tested, certified, and built to meet the highest safety, acoustic, and environmental standards. You can specify with total confidence—every detail is covered



FOUND
IN ALL THE
best
PLACES



NOKIA

Walmart

NASA

Capital One

BLACK+
DECKER

TikTok

Goldman
Sachs

General Mills

Deloitte.

AMERICAN
EXPRESS

J.P.Morgan

Royal
Caribbean
Group

randstad

pwc

VOLVO

databricks

THE UNIVERSITY
OF ARIZONA

Meta

NORTHROP
GRUMMAN

Pfizer

toast

Hasbro

IDT
INTEGRATED DNA TECHNOLOGIES

accenture



CAESARS
PALACE
LAS VEGAS

TESLA

AstraZeneca

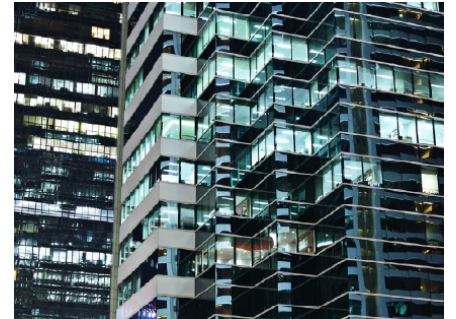
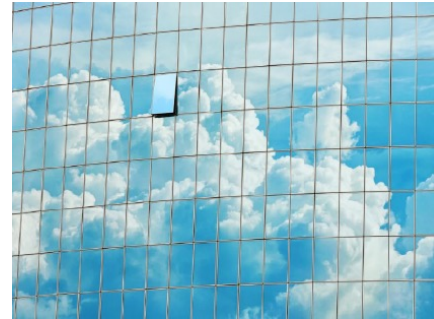
M | METRO HEALTH
UNIVERSITY OF MICHIGAN HEALTH

thinkspace

thinkspaceoffice.com

VERTICAL MARKETS *beyond* THE OFFICE

Hush Free pods can be found across a variety of industries and sectors, from the workplace, Education, Libraries, Co-working, Residential and Healthcare sectors.





thinkfast!

STOCKED IN THE U.S.
SHIPS IN 7 DAYS OR LESS

We inventory products in four U.S. locations. Every **ThinkFast** order ships within 7 days—no matter the order size.

thinkcash!

EXCLUSIVELY
FROM THINKSPACE

Start earning some extra cash on your
next hushFree sale with Thinkspace.

Getting started is as easy as 1, 2, 3!

Earn \$100 to \$300 per pod sold!



thinkspaceoffice.com

new e-tools!

DRAWING, VISUALIZING
AND PRICING AT YOUR
FINGERTIPS!

All current products

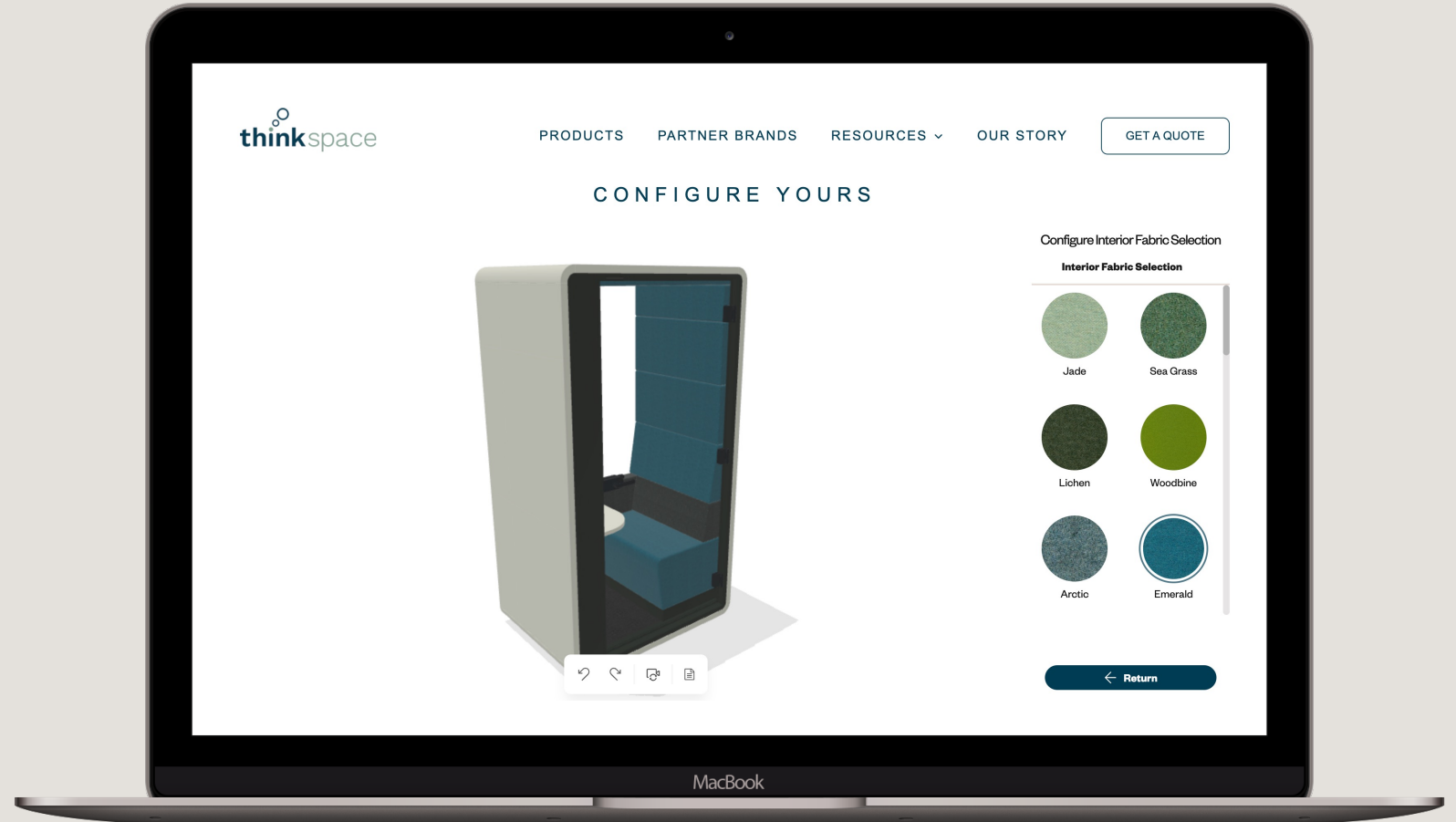
Optimized CAD files (public website)

Cyncly (formerly 20/20)

CAP + GIZA

CET – Commercial Interiors Library

Online Configurator



thinkspaceoffice.com

EVEN *better* THAN EVER

SINGLE OCCUPANCY

hushfree.XS

Quick
Phone Calls

90.5x 41.5x 35.5



hushfree.S

Longer Phone
Calls or Work

90.5 x 49 x 37



hushfree.S.Hybrid

Comfortable Video
Conferencing

90.5 x 49 x 37



hushfree.XM

Up to 2-Person
Meeting

90.5 x 87 x 35.43



hushfree.M

Up to 4-Person
Meeting

90.5 x 87 x 54.72



hushfree.L

Up to 8-person
Conference

90.5 x 87 x 109.45



hushfree.Access.M

Up to 4-person
Accessible Option

89.76 x 86.93 x 54.72



hushfree.Access.L

Up to 8-person
Accessible Option

89.76 x 86.93 x 109.45



THANK YOU FOR
YOUR TIME

Contact Info:

Anjul Chandi

Principal & CEO

anjul@thinkspaceoffice.com

+44 (0)7730 567973

For Quotes:

sales@thinkspaceoffice.com



inspiration

thinkspaceoffice.com